

How to Prevent and Eliminate Rats in Residential Settings Using Integrated Pest Management (IPM) 8/9/17

Ryan McCammon, Supervisor of Environmental Health for Ledge Light Health District

Goals:

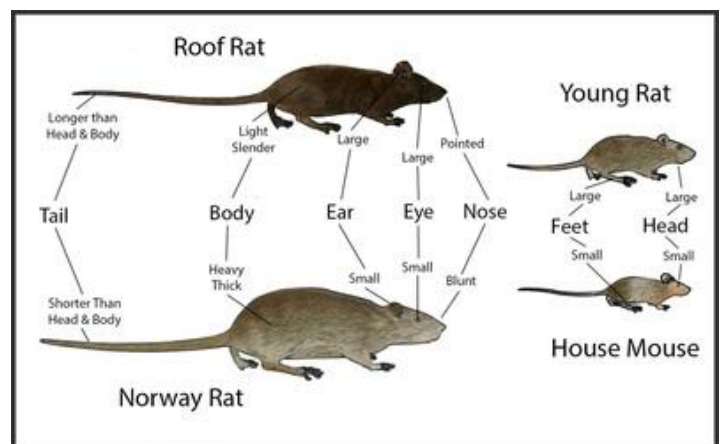
1. Eliminate rats from residential properties by removing what they like
 - a. ACCESS TO STRUCTURES (EXCLUSION)
 - b. FOOD SOURCES
 - c. SHELTER
 - d. WATER SOURCES
2. Utilize trapping, baiting, and monitoring once food and water sources are removed
3. Utilize least toxic and most species specific methods to eliminate rats

Integrated Pest Management (IPM) is a holistic approach to pest control utilizing multiple techniques to reduce and manage pest populations

- Setting Thresholds
- Identification and Monitoring
- Prevention
- Control

What do we know about Norway Rats (CT DEEP)?

1. Live 50-150' from their nests
2. Need a nearby and daily water source
3. Food high in protein or carbohydrates
4. Burrow around foundations and structures
5. Can enter openings as small as ½"
6. Can breed 12x per/yr & 8-12 young per litter
7. ¾-1 lbs & tails shorter than body and head



<http://rozkalnikina.weebly.com/blogs/no-visa-pa-druskai-par-policiju-auklitem-pelem-un-mopediem>

Easiest Prevention

EXTERIOR

- Eliminate bird feeders and standing water (bird baths and containers that can hold water)
- Ensure recyclables are rinsed and put out the morning of trash day
- Ensure trash is bagged and put out the morning of trash day in covered trash cans
- Do not feed animals outside
- Eliminate leaf litter and debris around foundations
- Eliminate animal waste



INTERIOR

- Keep all pet food in sealed containers and inside the house
- Check for and repair leaky plumbing
- Do not leave exposed food out in the open

Moderate Prevention

EXTERIOR

- Do not store firewood near the house, stack on pallets
- Seal all holes where wiring or pipes enter the house or foundation
- Ensure gutters are cleaned and not leaking
- Seal holes around the bulkhead ½" or larger
- Ensure garage and screen doors are sealed
- Replace weather stripping and patch any holes



INTERIOR

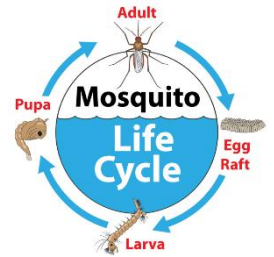
- Reduce clutter

More Difficult Prevention

- Eliminating dead wood or decaying trees
- Repairing attic screens and flashing
- Eliminating shrubs and vegetation around the foundation of the house
- If rats persist when the previous have been done, contact a CT licensed pest control operator who specializes in rat extermination using Integrated Pest Management Techniques (see next page)

How these prevention can help with other pests:

- Eliminating standing water will reduce mosquito breeding (larvicide available)
- Removing leaves and debris eliminates harborage for mice which carry ticks



What to do if you find a dead rat:

- Use disposable gloves on your hands and a shovel to scoop up the rat (avoid direct contact)
- Place the rat in a plastic bag, and then place the bagged rat in a second plastic bag and seal the bags
- Place the rat in your household trash (yellow Stonington bags) and put it out just before 7am on trash day, preferably in a covered trash container
- Remove and dispose of gloves in trash and wash your hand with soap and water for 20 seconds

What's Next?

- Feel free to contact Ryan McCammon (contact info below) to do a site assessment of your property
- **Once prevention methods have been conducted, and if rats persist, property owners should contact a licensed CT pest control operator**
- Pest control operators target burrows, nests, rat travel paths, food and harborage sources
- They place and monitor traps and use CT DEEP approved baits/pesticides in secure bait boxes (to exclude non-target animals)
- Speak to your pest control operator about the baits they use, how they work and any environmental risks to non-target species
- Search for registered pest control businesses, applicators and pesticides online at <http://www.kellysolutions.com/CT> or the CT DEEP Pesticide Management Program
- **PROPERTY OWNERS WHO PURCHASE AND PLACE THEIR OWN BAIT/PESTICIDES MUST FOLLOW THE LABEL FOR THE AMOUNT, PLACEMENT AND USE. PESTICIDES ARE POISONS AND IMPROPER USE CAN BE HAZARDOUS TO NON-TARGET ANIMALS. A PROFESSIONAL IS YOUR BEST BET!!**

Local CT Licensed Pest Control Operators:

Bio Tech Pest Controls-401-315-2400 <http://www.biotechpestcontrols.com/>

Griggs and Browne-800-962-3296 <http://www.griggsbrowne.com/>

Waltham Pest Services-888-970-5170 <https://www.walthamservices.com/locations/new-london-ct/>

Ryan McCammon, Supervisor of Environmental Health, Ledge Light Health District

152 Elm St (Town Hall, Upper Level), Stonington CT, 06378

860-535-5010 or 860-448-4882 ext. 301, rmccammon@llhd.org